

CHAPTER 14

EDUCATIONAL FACILITIES

This page intentionally left blank.

SECTION 1

INTRODUCTION

The Solon City School District is located in District 5 of the eleven state board school districts. The mission statement of the Solon City School District firmly expresses its dedication to educate its students:

“By inspiring students to achieve their personal best, the Solon City Schools will ensure all students attain the knowledge and skills necessary to succeed and become contributing, ethical citizens through a collaborative learning community working in partnership with families and our diverse community.”

The Solon Board of Education is located at 33800 Inwood Drive and is comprised of a five member board. The Solon City School District is comprised of seven schools that include one high school (Solon High School), two middle schools (Solon Middle School and Orchard Middle School), and four elementary schools (Parkside Elementary, Arthur Road, Dorothy E. Lewis, and Grace L. Roxbury School). “Table 14-1-A” lists some key statistics regarding the Solon City School District while “Map 14-1-A” portrays the location of each of these school buildings.

“Table 14-1-A”, Solon City School District—At a Glance

Item	Number or %
Total Enrollment, 2008-2009	5,188
Students per Teacher, 2007-08	17.8:1
Graduation Rate, 2007-08	97.9%
Avg Teacher Salary, 2008-09	\$71,866.00
Avg Expenditure per Pupil, 2008-09	\$12,647.00
Attendance Rate, 2008-09	96.8%
Performance Index, 2008-2009	109.5
District Rating: Excellent with Distinction	N/A
Minority Population	29%
Number of Full Time Teachers	335
% Tax Dollars to School District	68%
Composite ACT Score	25.1

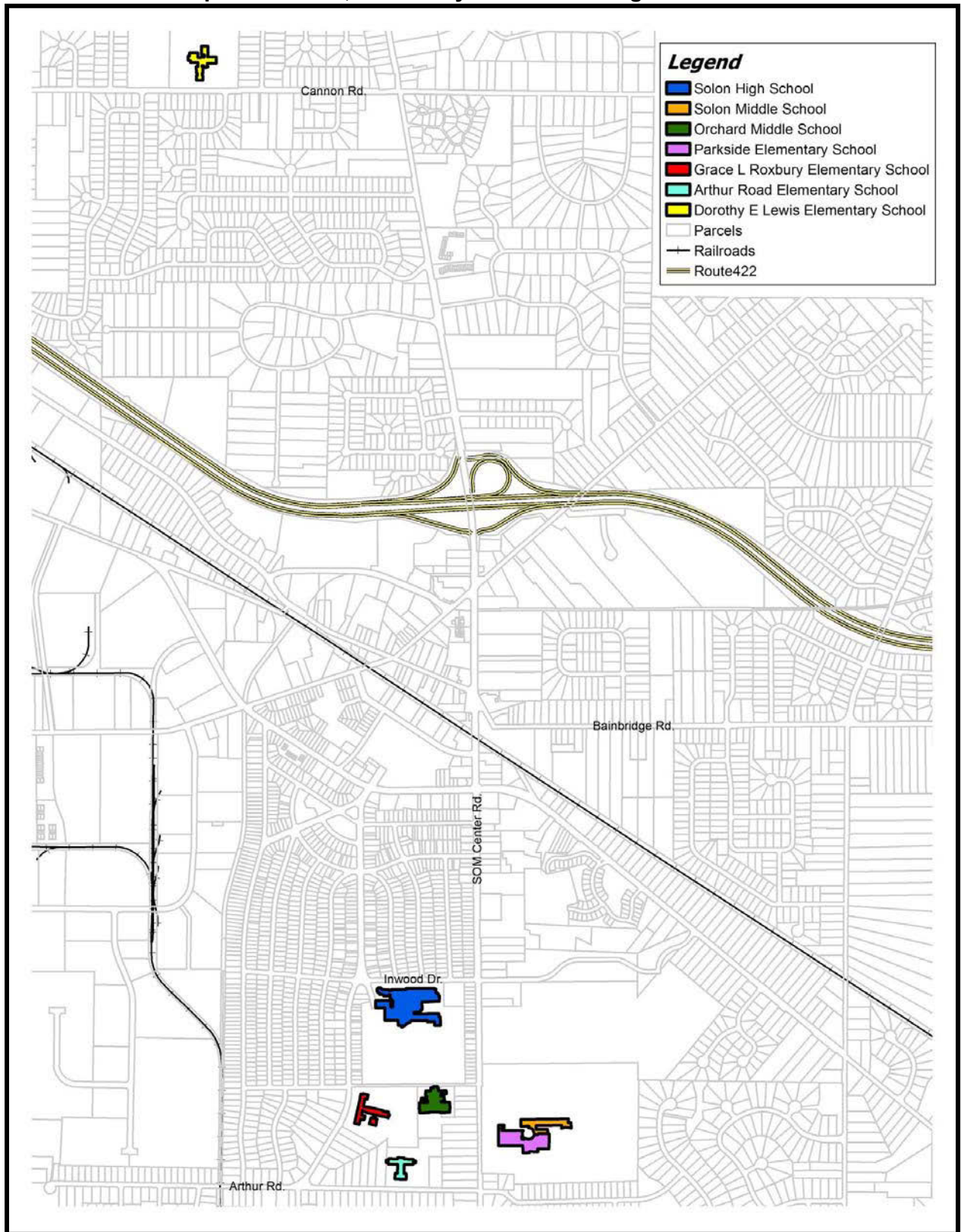
Source: Ohio Department of Education and Solon Board of Education

In addition to these seven schools, “Solon Schools Community Education”, which is located within Solon High School and is funded by the Solon City School District, also provides a wide variety of evening and weekend courses for adults and children. These include courses relating to dance, fitness, home improvement and design, culinary arts, finances, word processing, medical education, and others.

Students from Glenwillow Village attend the Solon City School District, but Solon residents living in the northwest corner of the city, however, attend the Orange Village School District.

City of Solon Master Plan

"Map No. 14-1-A", Solon City School Building Locations

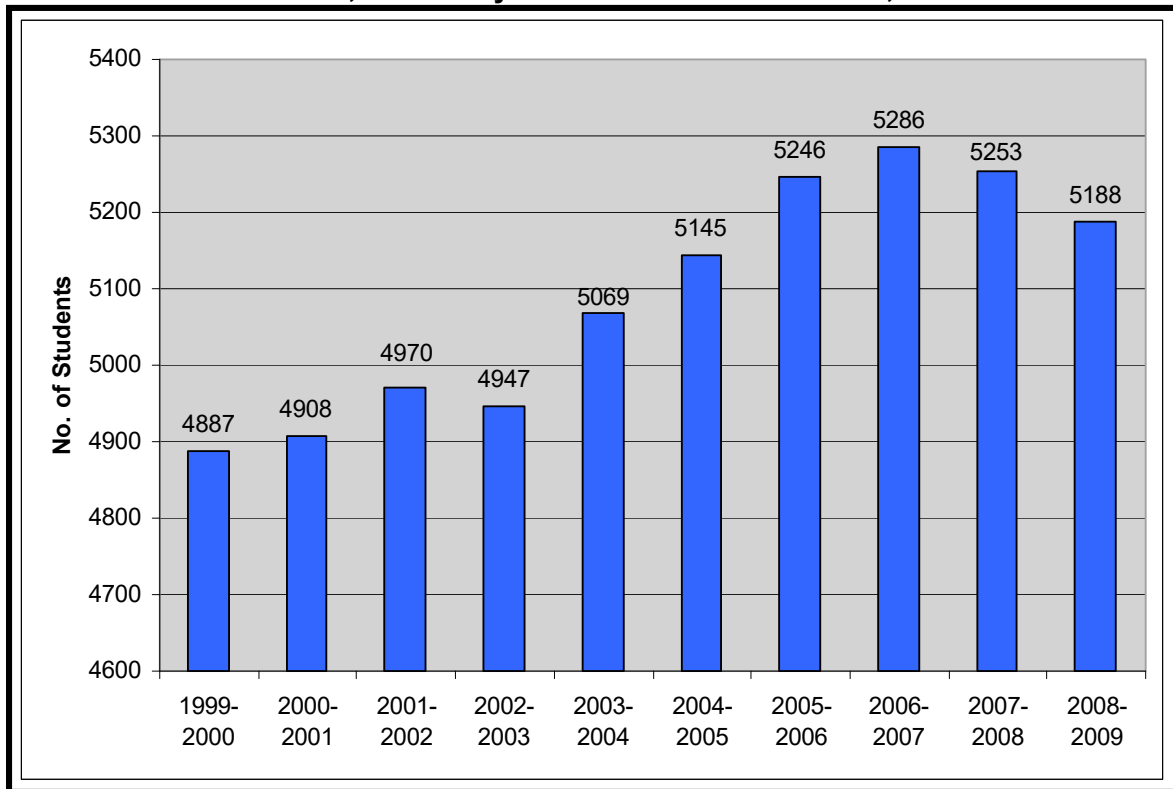


Source: City of Solon Department of Planning and Community Development

SECTION 2
ENROLLMENT RATES

Enrollment within the Solon school district has remained steady over the years according to statistics compiled by the Ohio Department of Education. The relative stability of the student population can in part be attributed to the fact that Solon officials and residents took proactive measures to control population growth through several residential re-zonings in 1987, 1994, and 1997. Larger lot size requirements were enacted which directly affected the amount of land available for new home development, which in turn affected the potential number of new families. With the City’s growth management efforts, the Solon school district has experienced a reasonable growth rate of 6.1% over the past decade as seen in “Chart No. 14-2-A” below.

“Chart 14-2-A”, Solon City School District Enrollment, 1999-2009



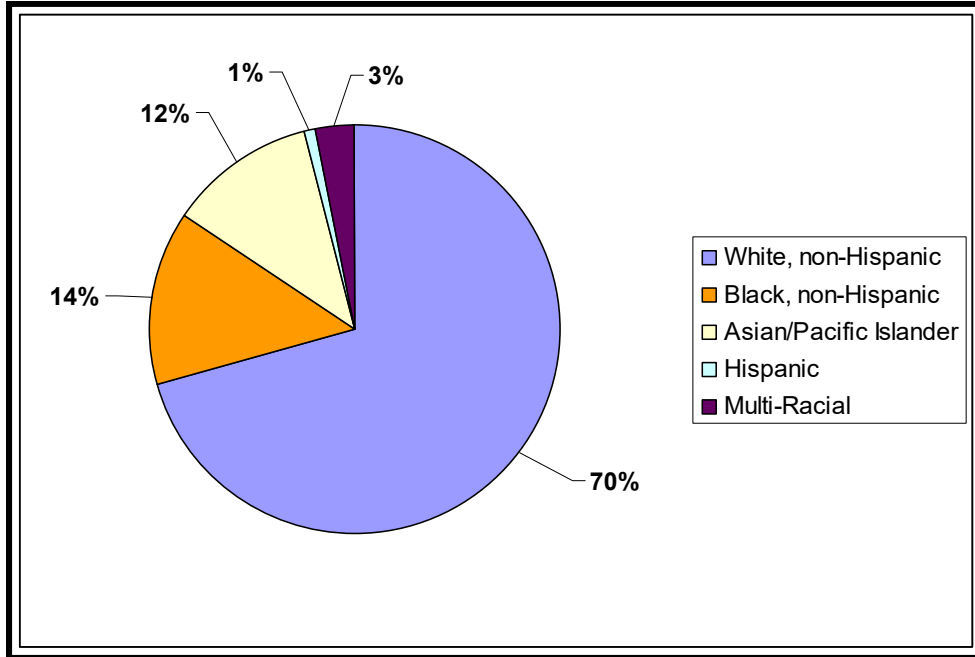
Source: Ohio Department of Education

“Chart 14-2-B” depicts percentage enrollment by race within the overall district. “Chart No. 3” illustrates a further breakdown of enrollment by building over the past three years. Enrollment at Arthur Road Elementary, Roxbury Elementary, Parkside Elementary, and Solon Middle School experienced a minor decrease in enrollment while Dorothy Lewis Elementary, Orchard Middle School, and Solon High School experienced minor increases in enrollment.

C i t y o f S o l o n M a s t e r P l a n

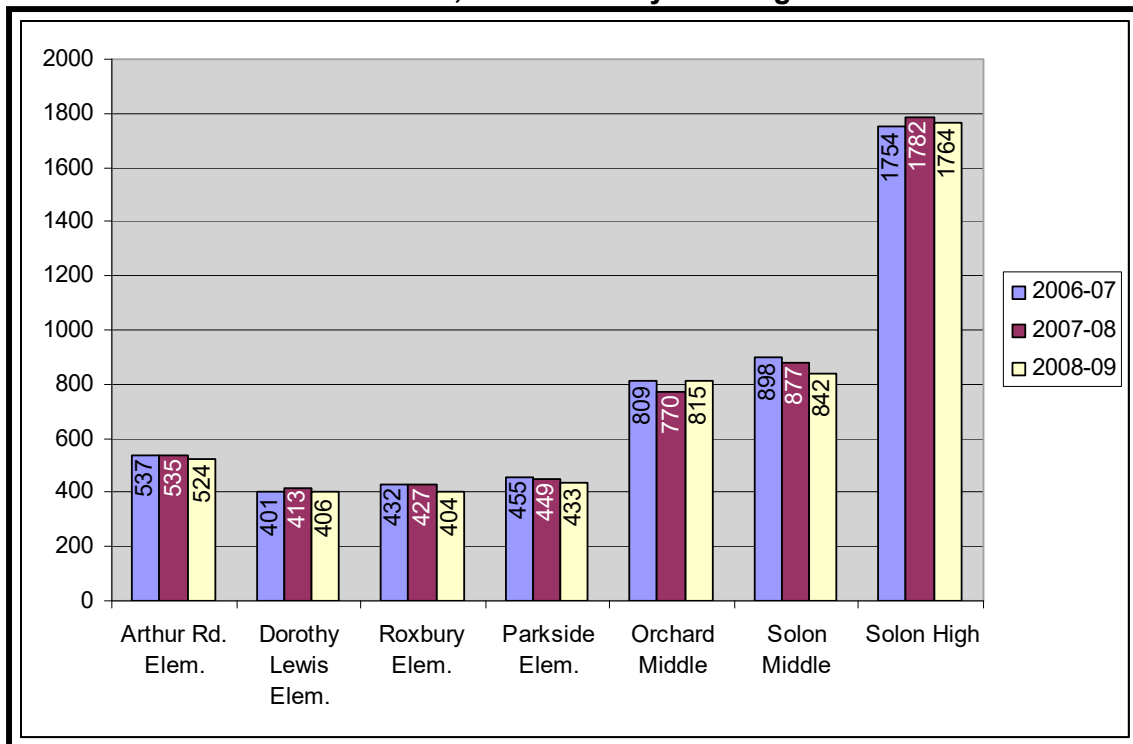
In terms of gender, the total number of males enrolled during the 2008-2009 school year outnumbered females by 4% with male enrollment totaling 52% and female enrollment totaling 48%.

“Chart 14-2-B”, Enrollment by Race, 2008-2009



Source: Ohio Department of Education, 2008-09 School Year Report Card

“Chart No. 3”, Enrollment by Building 2006-2009



Source: Ohio Department of Education

SECTION 3

EXPENDITURES AND TEACHER SALARY

Expenditures per Pupil

The Solon City School District expended \$12,647.00 per pupil during the 2008-2009 school year. The funding sources generally break down as follows: 73.4% from local revenue sources, 24.3% from state sources, and 2.2% from federal sources. “Table 14-3-A” provides a comparison of how expenditures have changed from the 2000-2001 school year to the 2008-2009 school year.

“Table 14-3-A”, Expenditures per Pupil 2000-01 and 2008-09

	Total Expenditures per pupil (2008-09)	Percentage of Total (2008-09)	Total Expenditures per Pupil (2000-01)	Percentage of Total (2000-01)
Administration	\$1,287.00	10.2%	\$874.00	9.1%
Building Operations	\$2,405.00	19%	\$1,914.00	19.8%
Staff Support	\$215.00	1.7%	\$264.00	2.7%
Pupil Support	\$1,202.00	9.5%	\$1,154.00	12.0%
Instructional	\$7,538.00	59.6%	\$5,444.00	56.4%
Total	\$12,647.00	100%	\$9,650.00	100%

Source: Ohio Department of Education

There are thirty-one school districts within Cuyahoga County and Solon is twelfth in expenditures per pupil at \$12,647.00. Beachwood is first at \$20,483.00, Orange is second at \$18,915, and Cuyahoga Heights is third at \$18,488.00 while Garfield Heights is last at \$9,838.00. The 2007-08 state average expenditure per pupil was \$9,636.60. “Table 14-3-B” compares Solon with other local school districts for expenditures per pupil, average teacher salary, number of teachers, and students per teacher during the 2007-08 and 2008-09 school year.

“Table 14-3-B”, Expenditures per Pupil, Average Teacher Salary, No. of Teachers and Students per Teacher

School District	Total Expenditures per Pupil (2008-09)	Average Teacher Salary (2008-09)	Number of Full Time Teachers (2008-09)	Students per Teacher (2007-08)
Solon	\$12,647	\$71,866	335	17.8
Bedford	\$12,639	\$56,156	259	19.9
Cleveland	\$14,309	\$65,575	3583	21.8
Westlake	\$12,538	\$67,675	250	19.4
Beachwood	\$20,038	\$76,763	132	13.4
Orange	\$19,916	\$78,625	193	14.9
Shaker Heights	\$16,194	\$70,676	394	14.5
Strongsville	\$12,349	\$65,068	399	20.8

Source: Ohio Department of Education

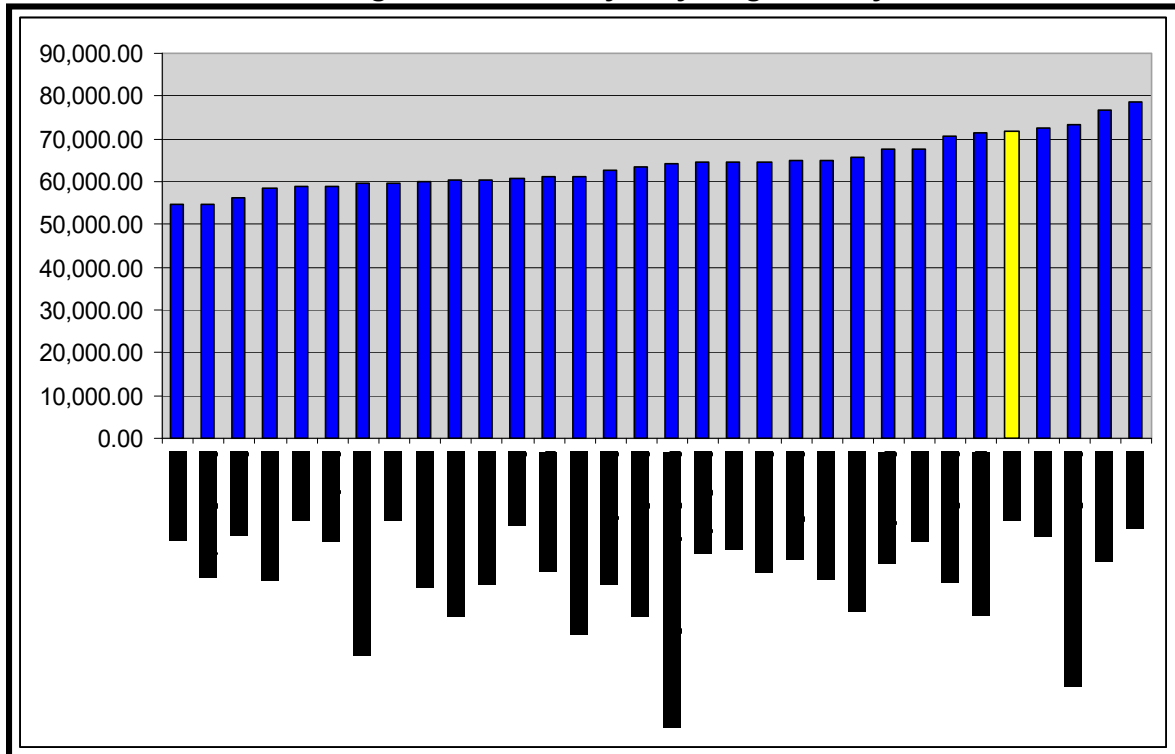
According to the Cuyahoga County Auditor’ Office for tax year 2009, 68% of property taxes paid by residents goes toward funding the school district. The year 2004 marked the first time in recent history that the city’s assessed valuation was lower than the year before due to businesses’ loss in revenues. This decrease in turn affects the amount of revenue the school has available for operations.

Average Teacher Salary

During the 2008-2009 school year, Solon was the fifth highest in Cuyahoga County and eighth highest in the state for average teacher salary with the average Solon teacher earning \$71,866.00. Orange City was the highest in Cuyahoga County and third highest in the state with teachers earning on average \$78,625.00. Of the top ten highest paying school districts within the State of Ohio, six are located within Cuyahoga County, including Orange City, Beachwood City, Brecksville-Broadview Heights City, Mayfield City, Solon City, and Cuyahoga Heights City.

In 2006-07 the national average teacher salary was \$51,009.00 while in 2008-2009, Ohio’s average teacher salary was \$54,656.00. “Chart 14-3-A” illustrates the average salary figures for each of the thirty-one school districts located within Cuyahoga County compared to the average for the State of Ohio.

“Chart 14-3-A”, Average Teacher Salary, Cuyahoga County School Districts



Source: Ohio Department of Education

SECTION 4

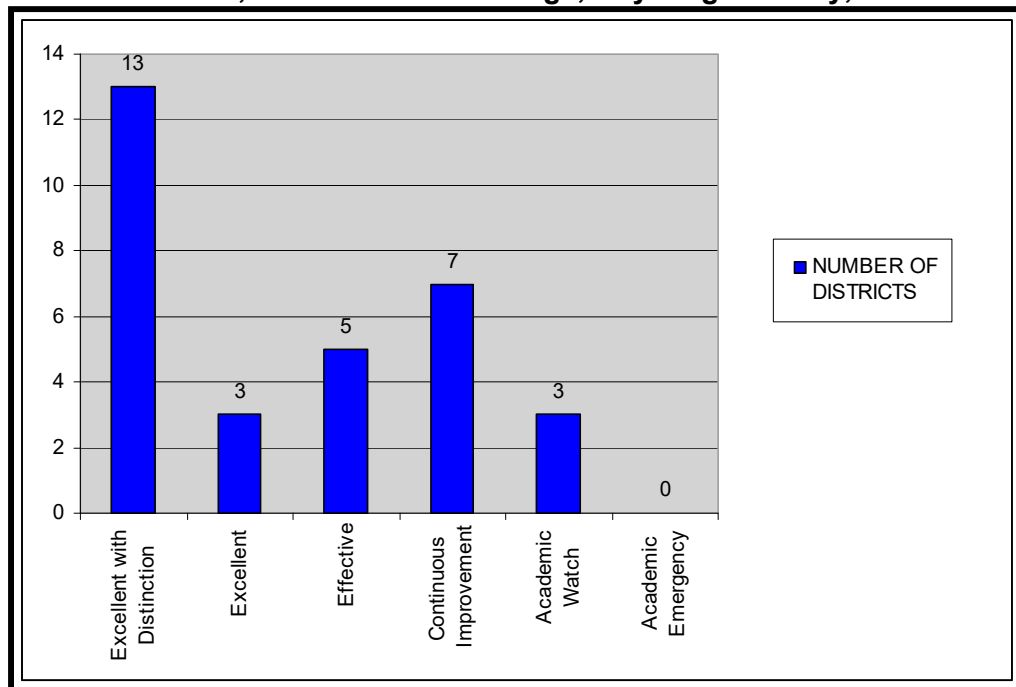
RATINGS, PROFICIENCY, AND HIGHER EDUCATION

District Rating and Performance Index

School district performance and achievement are largely measured by the district rating and the performance index. Each year the Ohio Department of Education issues a School Year Report Card for each school district and building which is a summary of that district’s or building’s performance and includes but is not limited to data on proficiency levels, assessment over time, performance index, adequate yearly progress, and teacher and student information. The report card contains the *district rating* which is based on state indicators, state performance index, and federal Annual Yearly Progress results. There are a possible six designations: Excellent with Distinction, Excellent, Effective, Continuous Improvement, Academic Watch, and Academic Emergency.

The Solon City School District has received the highest district rating possible—“Excellent with Distinction”—for the 2008-2009 and 2007-2008 school years which means that the growth was above what was expected for at least two consecutive years. The district received a rating of “Excellent” for the seven years prior. Out of the seven school buildings located in the district, Orchard Middle School and Arthur Road Middle School received the “Excellent with Distinction” designation while the other five received “Excellent”. “Chart 14-4-A” is a summary of all thirty-one school district ratings within Cuyahoga County as reported on each districts School Year Report Card.

“Chart 14-4-A”, School District Ratings, Cuyahoga County, 2008-2009



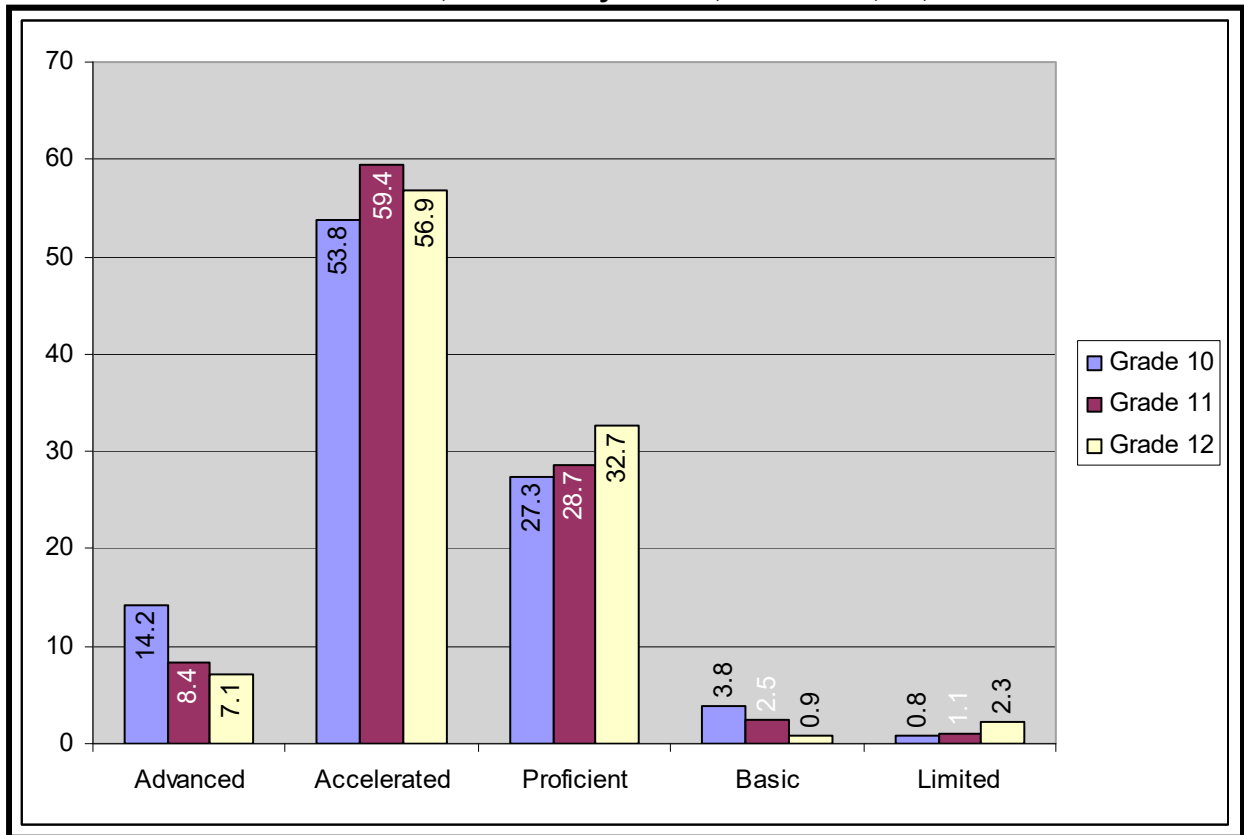
Source: Ohio Department of Education

During the 2008-09 school year in terms of *performance index*, the Solon School District had an index rating of 109.5 which was the third highest index rating in the State of Ohio; Wyoming City was first with 110.0 and Ottawa Hills Schools was second with 109.8. The performance index is important as it demonstrates each students performance level (limited, basic, proficient, accelerated, advanced) for that academic year. The index is a weighted average with a possible rating scale of 0 to 120 and is a valuable tool as the index rating can be compared each year to track a school district’s achievement or lack thereof. Solon’s performance index increased from 98.7 during the 2000-2001 school year to the current 109.5.

Student Proficiency

Solon students consistently achieve high scores on state proficiency tests in the core subjects of reading, social studies, mathematics, science, and writing. The State of Ohio requires a minimum proficiency of 75% in grades 3, 4, 5, 6, 7, 8, and 10 and 85% in grade 11. Tests are not administered in kindergarten or grades 1, 2, 9, and 12. Solon student scores range between 86.9%-99.6%, well above the minimum. Test subject matter varies by grade. “Chart 14-4-B” illustrates the overall proficiency levels of students in grades 10, 11, and 12 for all five of the core subjects.

“Chart 14-4-B”, Proficiency Levels, Grades 10, 11, 12



Source: Ohio Department of Education

Solon students also continually rank well above average on their ACT and SAT scores. The Class of 2009 had a composite ACT score of 25.1 while the national average was 22. The SAT scores were 561 in Reading, 587 in Math, and 566 in Writing compared to national scores of 501, 515, and 493 respectively. Additionally, 99.4% of graduates have an AP (Advanced Placement) score of 3 or above. This program allows students an opportunity to earn credit or advanced standing at colleges and universities.

Higher Education

In terms of higher education, according to the 2000 Census, 95% of Solon’s population has a high school degree or higher and 50% have a bachelor’s degree or higher. The Solon City School District has a healthy graduation rate of 97.9%. The Solon High School Profile shows that out of the 434 students in the Class of 2009, 95% were bound for two and four year colleges while the remaining 5% applied to business, technical schools, and the military.

This page intentionally left blank.

SECTION 5

SOLON BOARD OF EDUCATION FACILITIES

The Solon Board of Education is located at 33800 Inwood Drive and is responsible for overseeing the administrative and financial responsibilities of the Solon City School District. Six members serve on the Board of Education with three members serving as president, vice-president, and treasurer. There are seven school buildings within the district and the following provides a brief description of each facility during the 2008-09 school year:

Solon High School, Grades 9-12

Solon High School is located on 36 acres on the south side of Inwood Drive, with the school grounds containing a football field, tennis courts, baseball/softball diamonds and a bus garage and storage facility. The building area is approximately 259,912s.f. and there are approximately one hundred eleven (111) teachers.

Solon Middle School, Grades 7-8

Solon Middle School is located on a sixty-six (66) acre parcel on the east side of SOM Center Road in the same building as Parkside Elementary School and is known as the “dual school.” The school grounds contain an outdoor track and baseball/softball diamonds. The building area is approximately 166,142s.f. and there are approximately fifty-seven (57) teachers.

Orchard Middle School, Grades 5-6

Orchard Middle School is located on an eight (8) acre parcel on the west side of SOM Center Road. The building’s area is approximately 88,045s.f. and there are approximately fifty (50) teachers.

Parkside Elementary School, Grades K-4

Parkside Elementary School is located on the east side of SOM Center Road in the same building as Solon Middle School. An outdoor track and baseball/softball diamonds are available. The building’s area is 166,142s.f. and there are approximately twenty-eight (28) teachers.

Roxbury Elementary School, Grades K-4

Roxbury Elementary School is located on a fourteen (14) acre parcel on the east side of Solon Boulevard. An outdoor track and playground are available. The building’s area is approximately 60,081s.f. and there are approximately twenty-seven (27) teachers.

Arthur Road Elementary School, Grades K-4

Arthur Road Elementary School is located on a nine (9) acre parcel on the north side of Arthur Road. The building’s area is approximately 43,797s.f. and there are approximately thirty-four (34) teachers.

Dorothy Lewis Elementary School, Grade K-4

Dorothy Lewis Elementary School is the only Solon City School District building that is not located on the common school grounds situated around the Inwood Drive and SOM Center Road area. Instead, this school is located on a twenty-four (24) acre parcel at 32345 Cannon Road. A baseball/softball diamond and playground are available. The building area is approximately 60,133s.f. and there are approximately twenty-seven (27) teachers.

SECTION 6

OTHER SCHOOLS

In addition to the Solon City School district, there are a variety of private schools, day care facilities, and education centers in Solon. They include but are not limited to Solon Community Education, St. Rita Catholic School, Cleveland Hebrew School, Solon A.M.I. Montessori School, Chabad Daycare and School, Creative Playrooms Childcare Center, Kindercare Learning Center, Our Redeemer Lutheran Church Pre-school, Solon Cooperative Pre-School, Solon Jewish Pre-School, Solon Montessori School, and Pioneer Pre-School.

Cleveland State University (CSU) also opened a branch campus in Solon known as the “East Center” in 2004 which offers undergraduate, graduate, and continuing education courses. The East Center’s Mission is to “*Extend Cleveland State University education programs into local communities*”, which supports CSU’s primary Mission Statement which is “*Our mission is to encourage excellence, diversity, and engaged learning by providing a contemporary and accessible education in the arts, sciences, humanities and professions, and by conducting research, scholarship, and creative activity across these branches of knowledge. We endeavor to serve and engage the public and prepare our students to lead productive, responsible and satisfying lives in the region and global society.*”

This page intentionally left blank.

SECTION 7

SUMMARY

The preservation of the integrity of the Solon City School District and support of other educational facilities is of importance to both residents and businesses alike. Strong schools support strong communities and the City of Solon will continue to maintain the highest possible educational environment for its residents.

This page intentionally left blank.