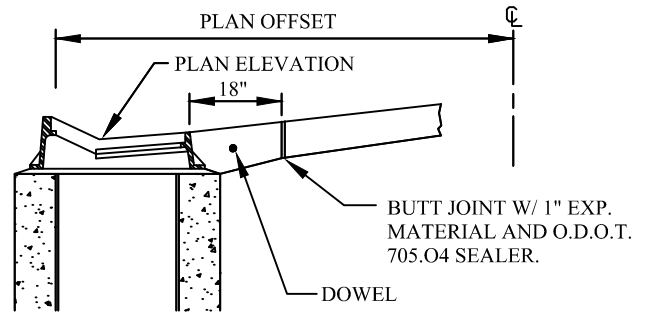


***NOTE:**

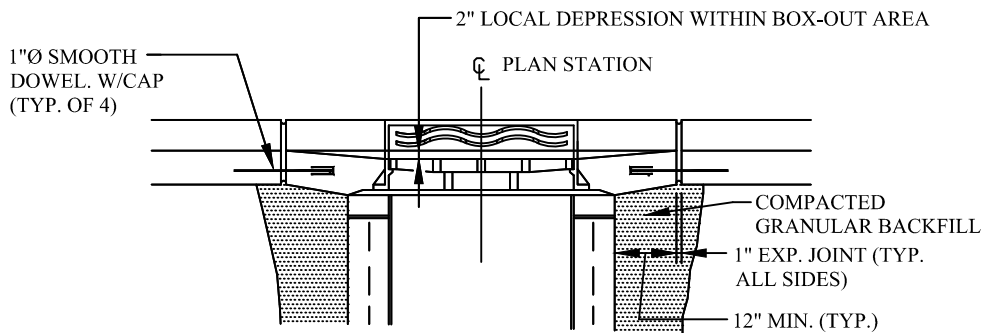
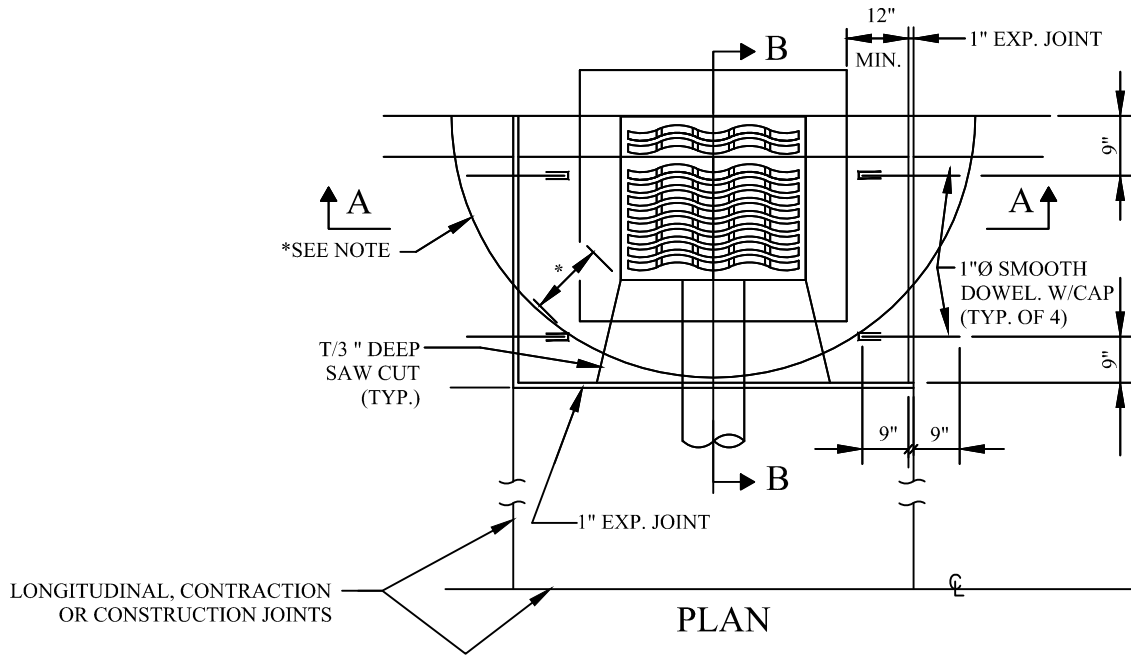
AN ALTERNATE INLET BOX-OUT TO BE USED WHERE RECTANGULAR BOX-OUT DOES NOT FIT PAVEMENT JOINT PATTERN OR WHERE DIRECTED BY ENGINEER. JOINT TO BE A SMOOTH BUTT JOINT WITH 1" EXPANSION MATERIAL. DELETE SMOOTH DOWEL BARS AND CAPS. * = 12" TO 24", AS DIRECTED BY ENGINEER.

GENERAL NOTES:

1. ALL WORK TO CONFORM TO O.D.O.T. ITEM 451. UNLESS OTHERWISE SPECIFIED.
2. CASTING IS EJIW #7390 WITH TYPE M3 GRATE



SECTION B - B



SECTION A - A

<p>CITY OF SOLON ENGINEERING DEPARTMENT</p>	<p>STANDARD DETAIL</p>	<p>CURB INLET BOX OUT FOR ROLLED CURB</p>
		<p>P-12B</p>