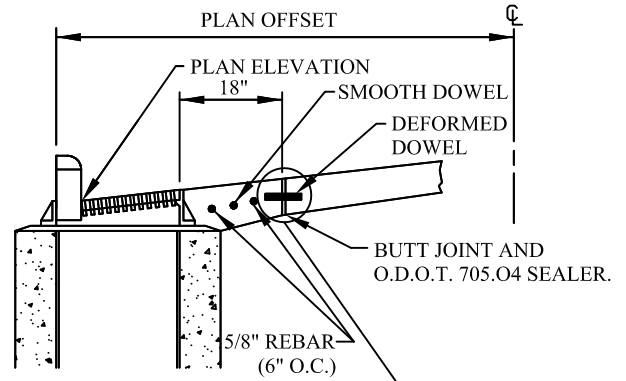


***NOTE:**

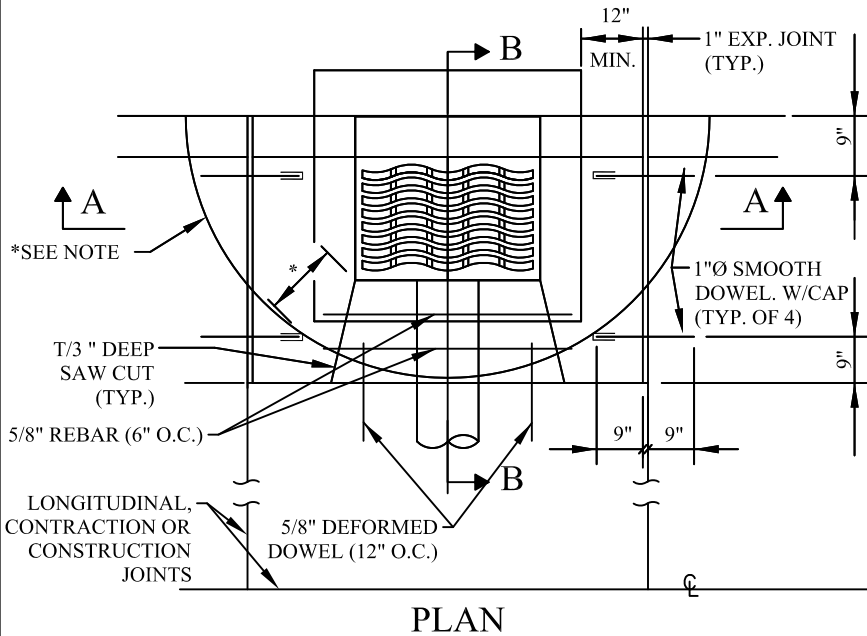
AN ALTERNATE INLET BOX-OUT TO BE USED WHERE RECTANGULAR BOX-OUT DOES NOT FIT PAVEMENT JOINT PATTERN OR WHERE DIRECTED BY ENGINEER. JOINT TO BE A SMOOTH BUTT JOINT WITH 1" EXPANSION MATERIAL. DELETE SMOOTH DOWEL BARS AND CAPS. * = 12" TO 24", AS DIRECTED BY ENGINEER.

GENERAL NOTES:

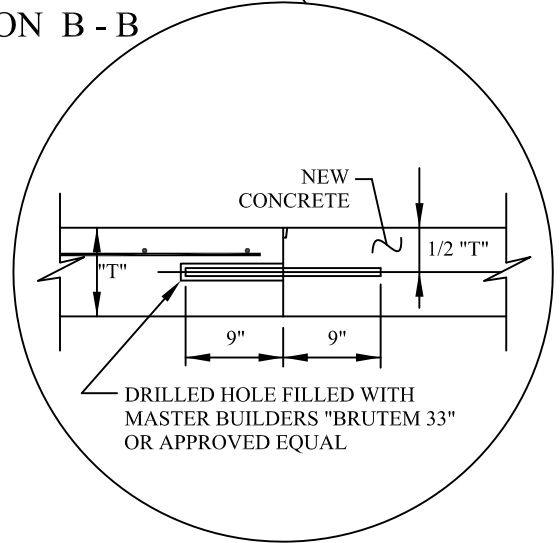
1. ALL WORK TO CONFORM TO O.D.O.T. ITEM 451. UNLESS OTHERWISE SPECIFIED.
2. CASTING SHALL BE EJIW 7035 WITH TYPE M6 GRATE AND T4 BACK.
3. FOR EXISTING PAVEMENTS: 18" LONG DEFORMED DOWEL 12" O.C. 5/8" DIAMETER FOR "T" ≤ 8" AND 1" FOR "T" > 8"



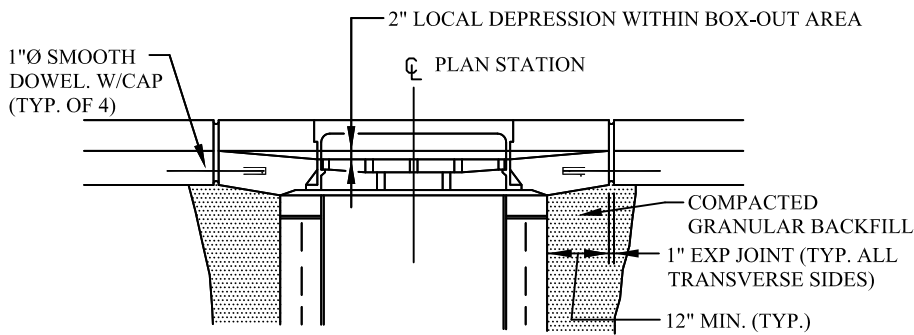
SECTION B - B



PLAN



DRILLED HOLE FILLED WITH MASTER BUILDERS "BRUTEM 33" OR APPROVED EQUAL



SECTION A - A

**CURB INLET
BOX OUT
FOR TYPE 6 CURB**

**CITY OF SOLON
ENGINEERING DEPARTMENT**

STANDARD DETAIL

P-12A