

## Types of Illegal Dumping



### Sediment

- orange, yellow, red
- odorless
- high turbidity



### Construction Runoff

- mud and debris on roadways
- grey, cloudy, odorless in water
- high in sediments and turbidity



### Sanitary Waste Water (Sewage)

- strong **foul smell**, grey color
- bubbles, foam, waste, toilet paper

Photos Courtesy of Prince William County, VA Illicit Discharge webpage and SWCD staff.

## TO REPORT ILLEGAL DUMPING CALL:

THE CITY'S SERVICE  
DEPARTMENT

WHERE DUMPING OBSERVED

OR

CUYAHOGA COUNTY  
BOARD OF HEALTH

216-201-2000

OR

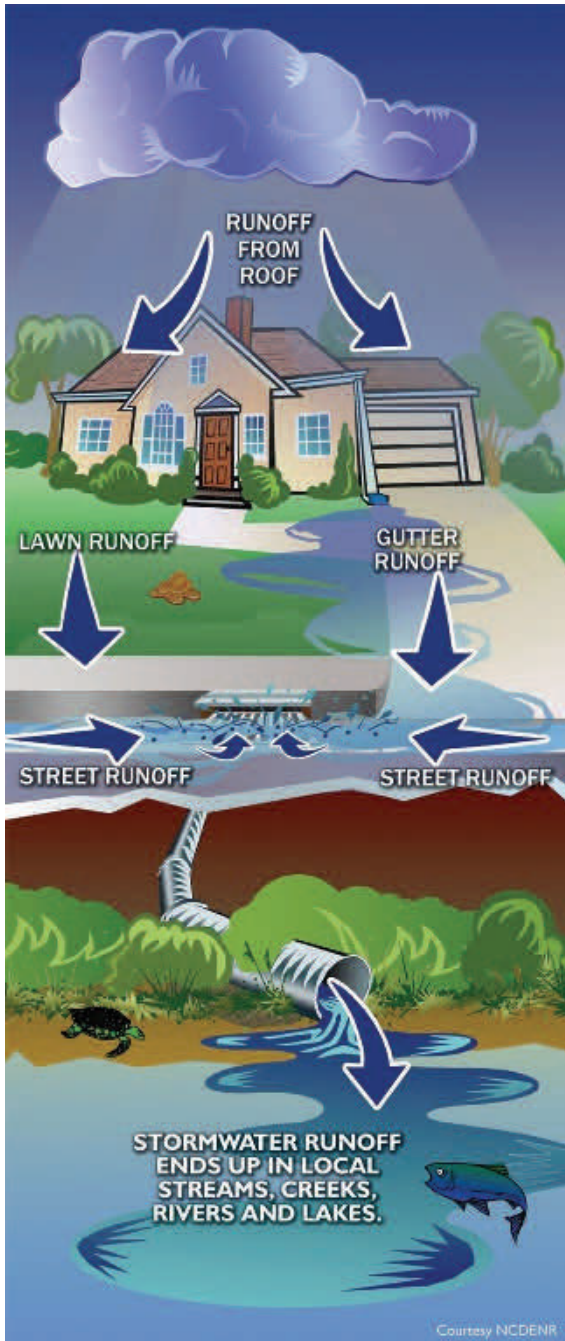
OHIO EPA

1-800-282-9378

## Illegal Dumping Identifying and Taking Action



## Where Does Stormwater Go?



## The Importance of Reporting Illegal Dumping

All rain and snowmelt flows off our roofs, lawns, and driveways, into the street and storm sewers, and directly to our rivers and lakes ***untreated!***

As stormwater runoff travels, it picks up pollutants and chemicals that may be harmful to public health & the environment. Sometimes, pollutants are directly dumped into storm drains and waterways from households or businesses.

Deliberate discharging of a pollutant that does not consist of stormwater into the storm drain is called an **illicit discharge**. These discharges contribute to high levels of pollutants, including heavy metals, toxics, oil and grease, solvents, nutrients, viruses and bacteria to receiving waterbodies.

*Suspicious discharges should be reported immediately  
(local contact numbers on back page).*

## Types of Illegal Dumping

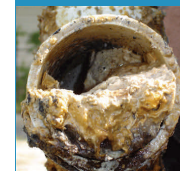


### Auto Materials (Oil/Fuel)

-rainbow sheen on storm drain, paved and water surfaces

### Soaps & Detergents

-white, milky color  
-bubbles, foam, high turbidity



### Grease (Petroleum & Cooking)

-yellow, golden, brown color  
-clumps and strings of material, stale grease odor  
-grease clog in pipe, cooking oil in stream

### Yard Waste

-grass clippings, woody debris, leaves, and other vegetation

